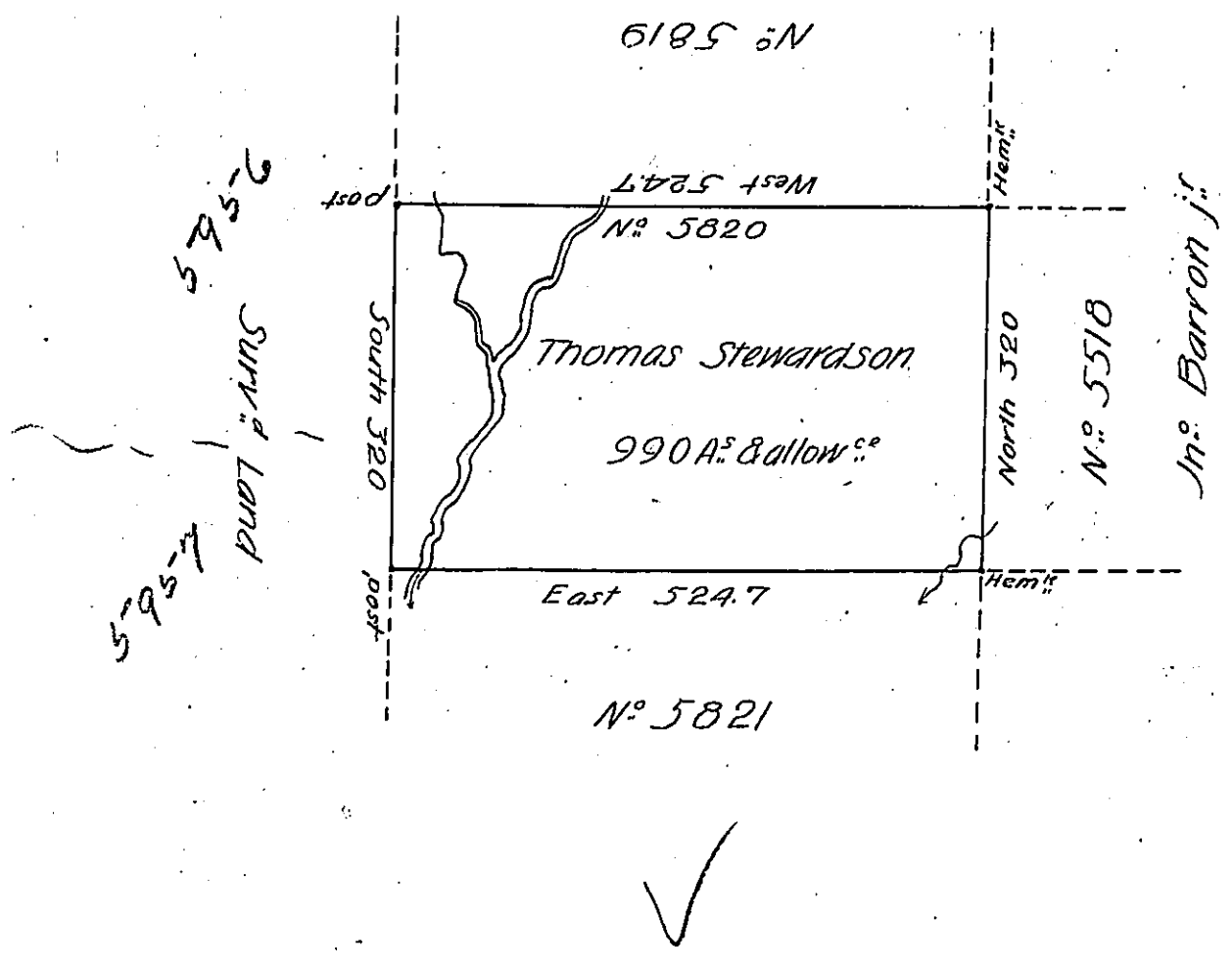


FORM No. 1.

(Stewardson  
— Potter)



A Draft of a Tract of Land Situate ~~in~~ in the Late Purchase Dist: N<sup>o</sup> 2, on  
 the Waters of Kettle Creek, adjoining Land Surveyed for John Barron jr.  
 Surveyed the 2<sup>d</sup> day of the fifth month 1798 in pursuance of a Warrant N<sup>o</sup>  
 5820, dated the 28<sup>th</sup> of March 1798 granted to Thomas Stewardson Contain=  
 ing nine hundred and ninety acres and allowance of Six P Cent for  
 Roads &c.

William Ellis D.S.

To Dan<sup>l</sup> Broddhead Esq.  
 Sur Gen<sup>l</sup>

IN TESTIMONY that the above is a copy of the original remaining on file in  
 the Department of Internal Affairs of Pennsylvania, made  
 conformably to an Act of Assembly approved the 16th day of  
 February, 1833, I have hereunto set my Hand and caused  
 the Seal of said Department to be affixed at Harrisburg,  
 this Ninth day of November 1906

*Isaac D. Brown*  
 Secretary of Internal Affairs.